

AVL Operations Check

Procedure to check AVL

If the truck's installed air card is active:

- Check if the AVL powers up
 - Keys can be in accessory or run position on Sterlings
 - Key must be in run position on Internationals
- The screen should look like it does in Figure 1 after it boots up

A green cherry ball indicates that cell service is connected.
Red indicates it is not.

The correct time on the screen and the green words "GPS Time" indicate that the GPS has satellite connection.

Incorrect time and red words indicate that it does not. Make sure truck is outside.

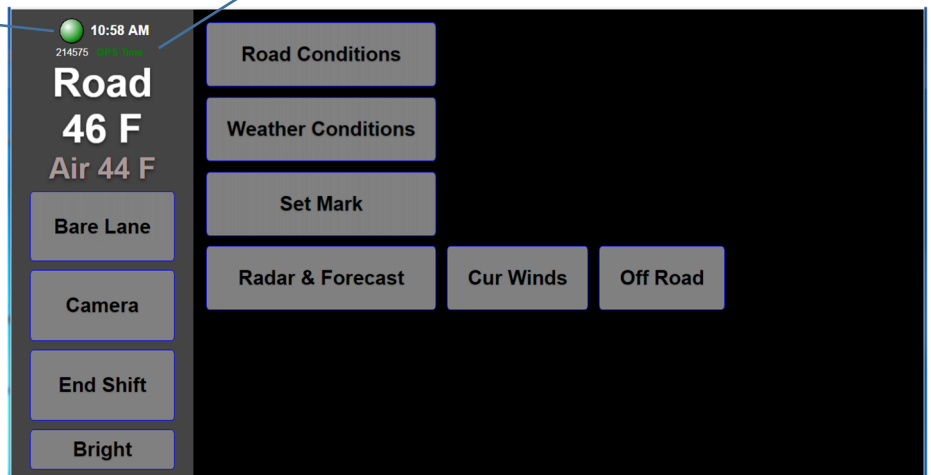
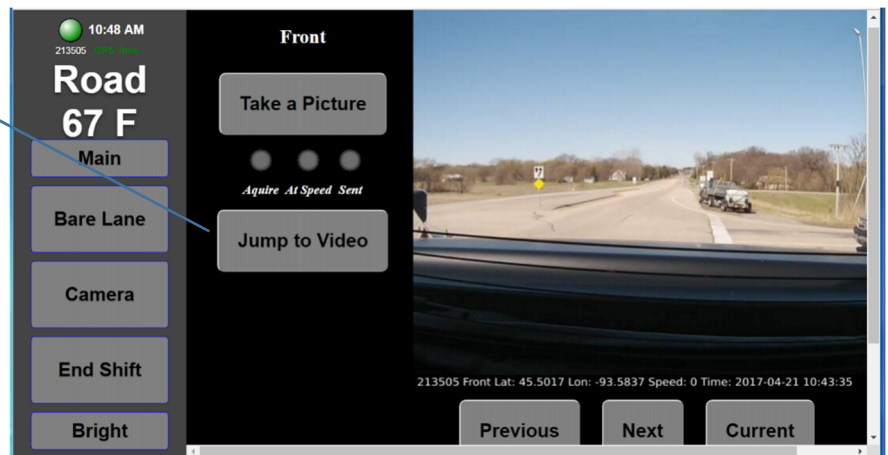


Fig. 1

- Touch the camera button on the touch screen. (if equipped with a camera)
- Choose the front button on the screen that pops up
- The image from the camera should appear on the screen

If camera adjustment is needed touch the jump to video button for a live image while adjusting



Your operations check is complete.

AVL Operations Check

Basic troubleshooting for Operations Check failures:

- The AVL won't power up
 - Check to make sure the screen is turned on - screen power indicator light and button are on edge of the screen
 - Check that the AT500 has power

The power button should be lit (blue light)



The power indicator light should be on (green)
 The HDD light (yellow) should flash when the computer is processing. A solid or no light may indicate a hard drive problem.

- Check lights on circuit board

Old Style Circuit Board



Top light always on
 (Units without battery cutout)

Remaining circuit board and CHARGE GUARD lights come on after a short delay

Lights come on with ignition

New Style Circuit Board

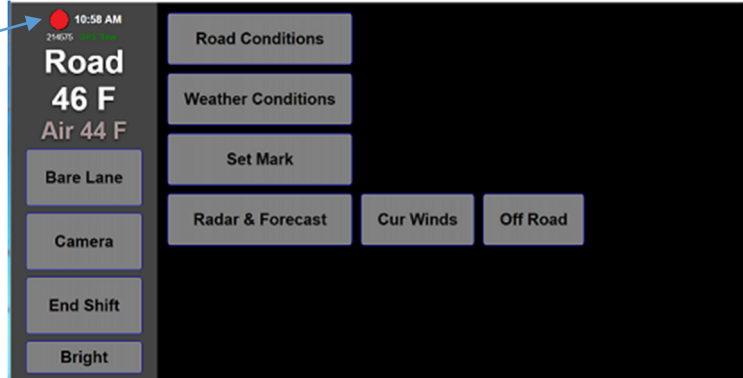


- If lights don't come on see the [AVL Troubleshooting Guide](#) in M5 for location of fuses on various models of trucks. Also, check fuses on circuit board above Charge Guard.
- If lights are on but accessories downstream don't power up, check fuses on circuit board. If the AVL screen doesn't seem to power up, first try the power button on the touch screen a couple times, make sure the truck has over 12 volts as screen will not power up below 12 volts.

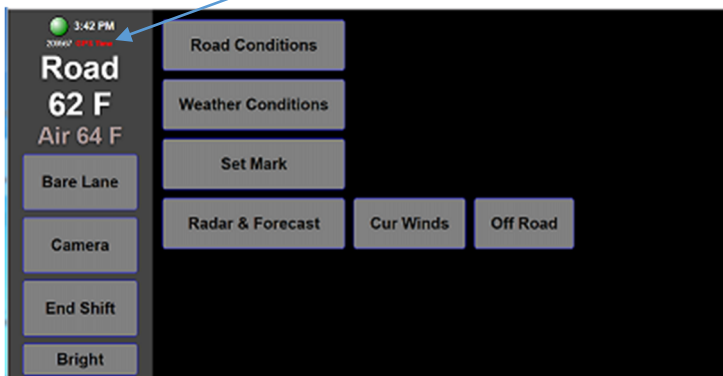
AVL Operations Check

Possible problems after the AVL has powered up:

- Red cherry ball
 - You may have to move the truck outside
 - You may be in a poor cell connection area, should go green again when in good cell coverage again.
 - The air card may have been deactivated
 - Get active air card with static IP address – Plug it directly into the usb port on driver’s side of AVL. If you use this port you don’t have to remove plastic shield but you do have to unplug the inactive air card. (may need a usb extension cord to bring air card to dash if you are in an area with weak signal)



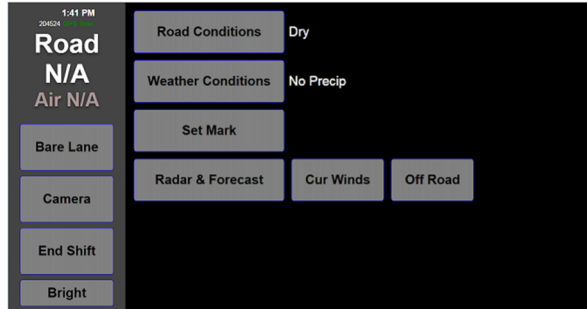
- The GPS time is incorrect and the text is red



- You may have to move the truck outside
- Inspect antenna and wire for damage (newer installs are on cab roof, older installs may be on cab shield)

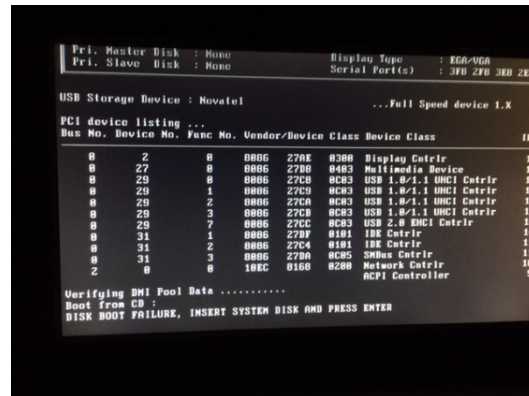
AVL Operations Check

- The road and air temps don't show up on the screen - NA
 - Does the unit have a temperature gauge mounted in the dash? (older unit)
 - If unit has a Dickey John sander control with a Road Watch temp sensor, (silver sensor mounted on the driver's mirror) make sure the Dickey John is turned on and the temps are displayed on the Dickey John screen.



- If the road and air temps show up but are incorrect recalibrate or replace sensors
 - Air temp often reads 0 with bad sensor (sometimes can be dried and reinstalled)
 - Dashes indicate a possible configuration or software problem
 - Contact your RWIS coordinator

- The image of the screen on the right indicates that you have a hard drive problem.
 - Hard drive replacement is usually required
 - Reinstalling software is an occasional fix



AVL Operations Check

These are some basic troubleshooting steps. For more detailed diagnostics check under the AVL Training Materials in M5 or contact your MDSS/AVL Coordinator.

MDSS/AVL Implementation Coordinator for Districts 1 and 2

Jay Pierzina: jay.pierzina@state.mn.us

Cell: 612-400-5739

MDSS/AVL Implementation Coordinator for Districts 3 and 4

Jakin Koll: jakin.koll@state.mn.us

Office: 320-223-6604 Cell: 320-241-3631

MDSS/AVL Implementation Coordinator for Districts 7 and 8

Doug Bakker: doug.bakker@state.mn.us

Office: 320-214-6403 Cell: 320-407-2222

MDSS/AVL Implementation Coordinator for Districts 6 and Metro

Alex Bruch alex.bruch@state.mn.us

Cell: 651-308-0395

AVL Operations Check

MDSS/AVL/RWIS Contacts

Statewide RWIS Coordinator

Jon Bjorkquist: jon.bjorkquist@state.mn.us

Cell: 218-821-1505

Transportation Program Team Leader; MDSS/AVL/RWIS

Jeff Jansen: jeffery.jansen@state.mn.us

Cell: 320-407-3373

MDSS/AVL/RWIS Supervisor

Joe Huneke: joseph.hunke@state.mn.us

Office: 651-366-3586 Cell: 651-900-5300